

NOTE: You may use your CALCULATOR for Section A and B:

Section A: DATA HANDLING (10 marks)

1. Three farmers grew potatoes, beans and cucumbers in their fields. The table shows how many kilograms they grew of each.

	Potatoes	Beans	Cucumbers
Farmer Michael	32	27	43
Farmer Jackson	29	23	36
Farmer William	34	28	47

- How many kilograms of beans did the farmers grow altogether ?
- How many kilograms of vegetables did Farmer Michael grow ?
- How many kilograms of cucumbers did Farmer William grow ?
- How many kilograms of potatoes were grown by Farmer Jackson and Farmer William altogether ?
- How many kilograms of vegetables were grown altogether ?

2. The school nurse made a tally chart of the illnesses that she came across at Sithemba Primary School which the children had during the school year.

ILLNESSES

Flu	### ### ### //
Measles	////
Mumps	//
Chicken pox	### /
Colds	### ### ### ### ////



- How many children had flu ?
- How many more caught a cold than flu ?
- Which illness is the most common ?
- How many children had mumps or measles altogether ?
- What is the total number represented by the tally system ?

(10 marks)

Section B: Word Sums (20 marks)



1. You may use your calculator.
2. Do the sums one below the other.
3. Rule off after each sum.

1. Mr Molefe wants to buy a new fridge which costs R 8 765. If he already has R 6 987, how much does he still need to buy the fridge ? (2)
2. A two litre container of ice-cream costs R54,99.
How much will 29 containers of two litre ice-creams cost ? (2)
3. A company gives boxes of toys to a school. Each box contains eight toys.
How many boxes are needed to pack 1 272 toys ? (2)
4. Each year Farmer Joe fertilizes the following: 1 355 maize plants, 2 325 apples trees and 3 784 wheat plants. How many plants were fertilized altogether ? (2)
5. Sally jogs for 45 minutes per day and 7 days per week. How many hours and minutes does she jog per week ? (3)
6. Luke's father has 2 448 chickens on his chicken farm. During the year $\frac{1}{8}$ of the chickens died of bird flu. How many chickens died ? (2)
7. Nandipha collected 127 stickers for her album. Her friend, Sihle, collected 16 times as many stickers as Nandipha. How many stickers did they collect altogether ? (3)
8. Mr and Mrs Smith are going on an aeroplane trip. Mr Smith's suitcase weighs 11 466 grams and Mrs Smith's suitcase weighs 14 570 grams.
How much do the two suitcases weigh altogether ?
Answer in kg and grams. (3)



9. Write down only the answer:

A tin of coffee has a mass of 375 grams. A box of tea has a mass of 250 grams. How many boxes of tea will have the same mass as eight tins of coffee ? (1)

Section C:

Measurement

(8 marks)

1. Convert 7 kg 29 grams to grams.
2. Round off 6 327 metres to the nearest km.
3. Write $5 \frac{1}{2}$ metres as millimetres.
4. 9 075 metres = _____ km _____ m.



5. Look carefully at the products and containers below:



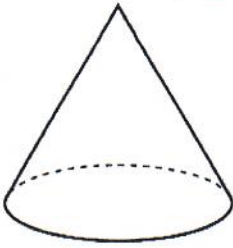
- a) What is the unit of capacity used ?
- b) Write down the names of the containers from the highest capacity to the lowest capacity ?
- c) What is the difference in volume between the milk and the fizz can ?
- d) How many yoghurt tubs are required to fill the milk carton ?



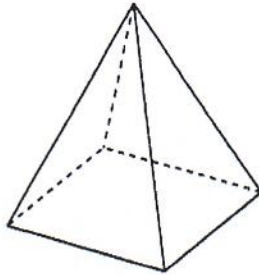
Section D:

Geometry (7 marks)

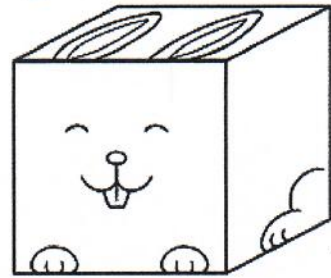
A



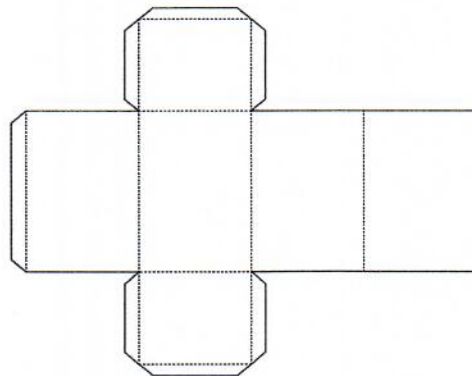
B



C



1. Shape B has _____ vertices.
2. What do we call Shape A ?
3. Shape C has _____ faces.
4. True or False: Shape A has 2 edges.
5. Which 3D shape does the net below represent ?



6. Name the 2D shape in the middle of the star ?



7. How many triangles do you count in this shape ?

